

TM 9-6115-545-24P  
TO 35C2-3 44 4  
NAVFAC P-626-24P  
SL-400038G/07499A

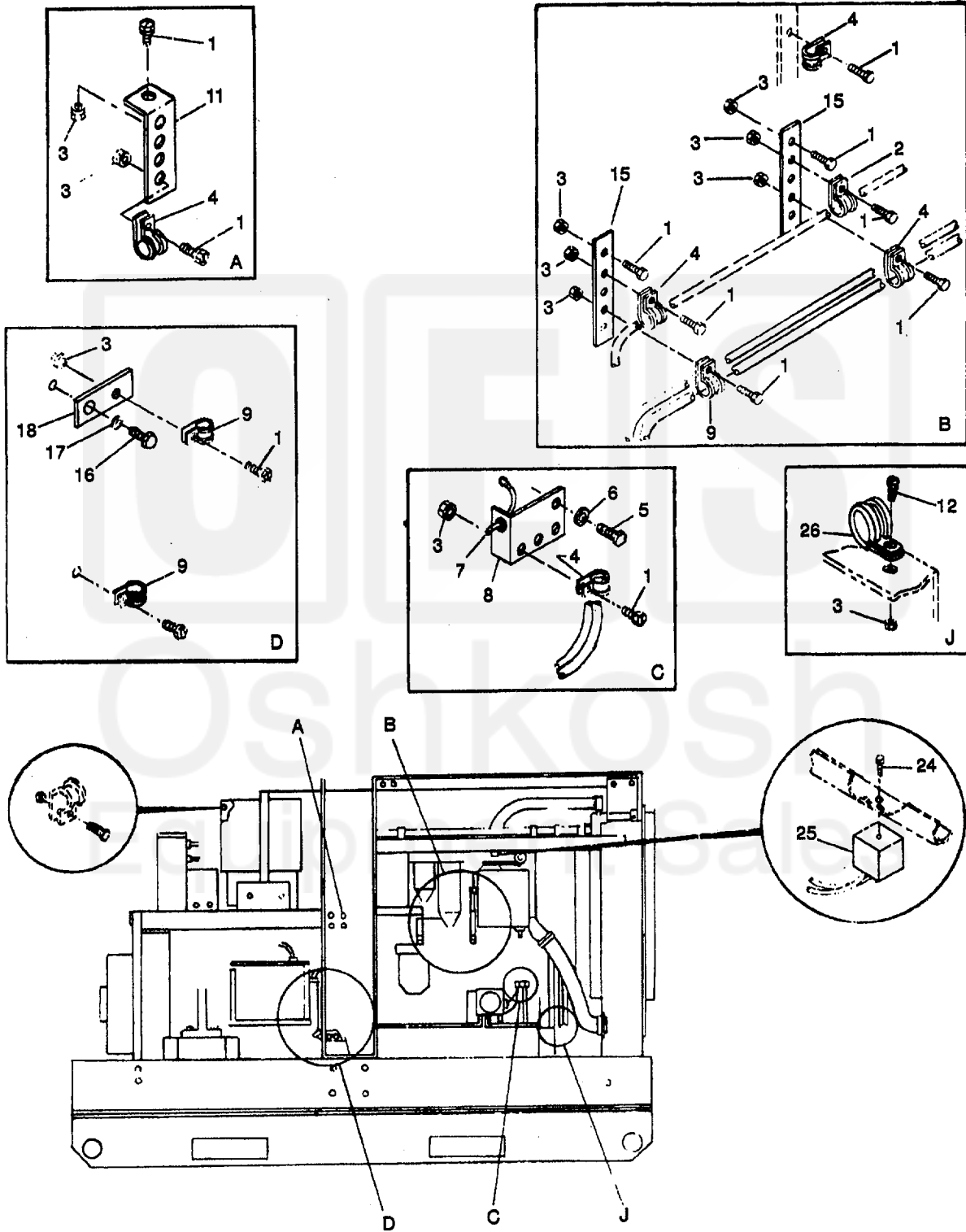


Figure 18. Engine Generator and Chassis Wiring Harness (Sheet 1 of 2).

TM 9-6115-545-24P  
TO 35C2-3 444 4  
NAVFAC P-8-626-24P  
SL-400038G/07499A

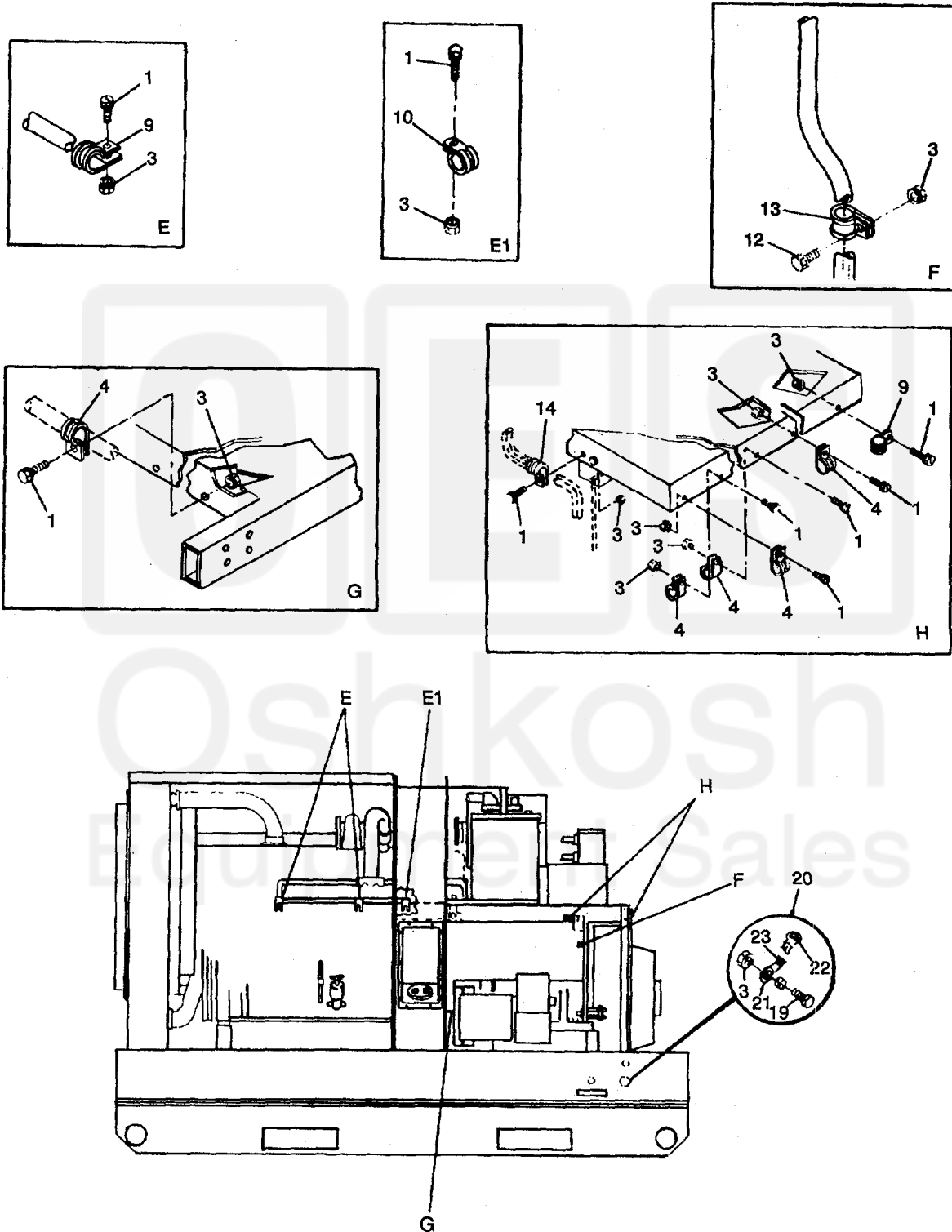


Figure 18. Engine Generator and Chassis Wiring Harness (Sheet 2 of 2).

TM 9-6115-545-24P  
TO 35C2-3 44 4  
NAVFAC P-8-626-24P  
SL-400038G/07499A

(1) ILLUSTRATION		(2) SMR CODE				(3) USMC		(4) NATIONAL STOCK NUMBER	(5) DESCRIPTION			(6)	(7)	(8)
(a) FIG NO.	(b) ITEM NO.	a ARMY	b AIR FORCE	c NAVY	d USMC	a SSI	b REPL FACTOR	REF NUMBER	MFR CODE	USABLE ON CODE	U/M	QTY INC IN UNIT	USMC QTY PER EQUIP	
18	1	PAOZZ	PAOZZ	XBOZZ	PAFZZ	D	.008	5306-00-036-6909	GROUP 09 - ENGINE GENERATOR AND CHASSIS WIRING HARNESSSES BOLT, ASSEMBLED WASHER 1/4-20 X 1/2 IN. LG 70-1319-2 (30554) 61-250881-00-242B-0542B (78189)		EA	24	119	
18	2	PAOZZ	PAOZZ	XBOZZ	PAFZZ	D	.008	5340-00-126-7450	CLAMP, LOOP, CUSHIONED 70-1529-4 (30554) TA724SS-4 (84971)		EA	1	2	
18	3	PAOZZ	PAOZZ	XBOZZ	PAFZZ	D	.008	5310-00-696-5173	NUT, ASSEMBLED WASHER 69-561-5 (30554) 511-251800-00 (78189)		EA	18	131	
18	4	PAOZZ	PAOZZ	XBOZZ	PAFZZ	D	.008	5340-00-333-6448	CLAMP, LOOP, CUSHIONED 70-1529-6 (30554) TA724SS6 (84971)		EA	2	29	
18	5	PAOZZ	PAOZZ	XBOZZ	PAFZZ	D	.008	5305-00-115-9526	SCREW, CAP. HEX HEAD 3/8-16 X3/4 IN LG MS18154-58 (96906)		EA	2	7	
18	6	PAOZZ	PAOZZ	XBOZZ	PAFZZ	D	.010	5310-00-061-1258	WASHER, LOCK MS45904-76 (96906)		EA	2	66	
18	7	PAOZZ	PAOZZ	PAOZZ	PAFZZ	D	.060	5930-00-655-1514	SWITCH, TOGGLE MS35058-22 (96906)		EA	1	3	
18	8	XBOZZ	MOO	XBOZZ	XBFZZ				BRACKET 70-1537 (30554) 70-1537 (93742)		EA	1	1	
18	9	PAOZZ	PAOZZ	XBOZZ	PAFZZ	D	.008	5340-00-174-4811	CLAMP, LOOP, CUSHIONED 70-1529-8 (30554) TA724SS8 (84971)		EA	4	7	
18	10	PAOZZ	PAOZZ	XBOZZ	PAFZZ	D	.008	5340-01-124-7781	CLAMP, LOOP, CUSHIONED 70-1529-9 (30554) TA724SS9 (84971)		EA	1	2	
18	11	PAOZZ	MOO	XBOZZ	PBFZZ			5340-01-157-2496	BRACKET, MOUNTING 70-1538 (30554) 70-1538 (93742)		EA	1	2	
18	12	PAOZZ	PAOZZ	XBOZZ	PAFZZ	D	.008	5306-00-036-6982	BOLT, ASSEMBLED WASHER 1/4-20 X 3/4 IN LG 70-1319-4 (30554) 61-251281 -00-0242B-0542B (78189)		EA	1	71	
18	13	PAOZZ	PAOZZ	XBOZZ	PAFZZ	D	.008	5340-00-174-4821	CLAMP, LOOP, CUSHIONED 70-1529-14 (30554) TA724SS14 (84971)		EA	1	1	
18	14	PAOZZ	PAOZZ	XBOZZ	PAOZZ	D	.008	5340-00-993-2308	CLAMP, LOOP, CUSHIONED 70-1529-12 (30554) TA724SS12 (84971)		EA	1	2	
18	15	PAOZZ	PAOZZ	XBOZZ	PAFZZ			5340-01-176-6947	BRACKET 70-1534 (30554) 70-1534 (93742)		EA	2	2	
18	16	PAOZZ	PAOZZ	XBOZZ	PAFZZ	D	.008	5305-00-724-5906	SCREW, CAP HEX HEAD 5/11 X 3/4 IN LG MS90725-156 (96906)	AD	EA	1	5	
18	17	PAOZZ	PAOZZ	XBOZZ	PAFZZ	D	.010	5310-00-017-8627	WASHER, LOCK, I E T 5.8 IN. MS45904-92 (96906)	AD	EA	1	10	
18	18	XBOZZ	MOO	XBOZZ	XBFZZ				BRACKET 70-1535 (30554) 70-1535 (93742)	AD	EA	1	2	
18	19	PAOZZ	PAOZZ	XBOZZ	PAFZZ	D	.008	5305-00-549-7287	SCREW, ASSEMBLED WASHER 1/4-20 X 1 IN. LG 70-1319-6 (30554) 61-251681-00-0242B-0542B (78189)		EA	1	3	
18	20	MOOZZ	AOO	XBOZZ	AFFZZ	-	.008		STRAP, GROUND 70-1604 (30554) 70-1604 (93742)		EA	1	1	
18	21	PAOZZ	PAOZZ	PAOZZ	PAFZZ	D	.008	5940-00-143-4777	LUG, TERMINAL MS25036-157 (96906)		EA	1	7	

TM 9-6115-545-24P  
 TO 35C2-3 444  
 NAVFAC P-8-626-24P  
 SL-400038G/07499A

(1) ILLUSTRATION		(2) SMR CODE				(3) USMC		(4)	(5) DESCRIPTION			(6)	(7)	(8)
(a) FIG NO.	(b) ITEM NO.	a ARMY	b AIR FORCE	c NAVY	d USMC	a SSI	b REPL FACTOR	NATIONAL STOCK NUMBER	REF NUMBER	MFR CODE	USABLE ON CODE	U/M	QTY INC IN UNIT	USMC QTY PER EQUIP
18	22	PAOZZ	PAOZZ	PAOZZ	PAFZZ	D	.008	5940-00-143-4794	LUG, TERMINAL			EA	1	37
18	23	PAOZZ	PAOZZ	PAOZZ	PAFZZ		.080	6145-00-765-4280	MS25036-112 BRAID WIRE, TUBULAR	(96906)		EA	1	1
18	24	PAOZZ	PAOZZ	PAOZZ	PAFZZ	D	.008	5305-00-038-3103	300-28B SCREW, ASSEMBLED WASHER 8-32	(04946)		EA	1	26
18	25	PAOZZ	PAOZZ	PAOZZ	PAFZZ	I	.020	5961-00-394-0902	X 12 IN. LG. 69-662-35 61-080841-40-0142B0542B	(30554) (78189)		EA	1	1
18	26	PAOZZ	PAOZZ	PAOZZ	PAFZZ	D	.008	5340-01-175-7022	RECTIFIER. SEMICONDUCTOR 70-1599 B470	(30554) (06288)		EA	1	1
									CLAMP, LOOP, CUSHIONED 70-1529-28 TA724SS-28	(30554) (84971)		EA	1	1